



Telo

Immersive Language Learning **MICROGRANT**

TeloAI combines AI-driven language immersion, speaking interaction, and standards-aligned curriculum for World Language instruction in K-12 schools.

Think of TeloAI as a “Smart” Teacher Assistant for ESL, French, or Spanish language instruction. Empower every student with one-on-one speaking practice without adding to your teachers’ workload.

Why Apply for the Immersive Language Learning MicroGrant 2025?

- *Recipients of this grant will receive:*
 - **A full year subscription of TeloAI** designed to demonstrate measurable impact in ESL, French, and Spanish.
 - A **companion robot** that builds rapport with students and makes language practice engaging, that you keep!
 - Access to the **TelOne Teacher Dashboard with AI insight** on student language acquisition including vocabulary growth, challenges, and engagement time.
 - **Support from the Telo team** to ensure smooth integration into your classrooms.
 - **The total value of the grant is \$3000/award.**
 - **Five awards will be granted for the 2025-26 school year to educators in the United States and worldwide.**

Microgrant application

Deadline extended to 11/18/25

Don't miss the opportunity to bring TeloAI to your school. The time burden to apply is less than <15 minutes.

https://bit.ly/TeloAI_Grant_2025



Telo



Ideal for
English Language Learners

Immersive Language Learning & AI

Why TeloAI for Language Immersion?

- **Bridge staffing gaps:** *ESL, French, and Spanish programs often lack teacher assistants. TeloAI is the perfect “smart” teaching assistant, empowering teachers to provide 1:1 support for all learners.*
- **Boost student voice:** *Every learner gets the chance to practice speaking daily, something impossible in large classes.*
- **Actionable teacher insights:** *Teachers receive clear, data-driven reports on vocabulary growth, accuracy, and engagement.*
- **Equitable access:** *Ensures your ESL, French, and Spanish learners receive the same individualized attention as other students.*
- **True Personalized Language Immersion:** *TeloAI remembers each student’s preferences and learning style, creating a sense of continuity and trust.*

ESL+

Introducing Telo!

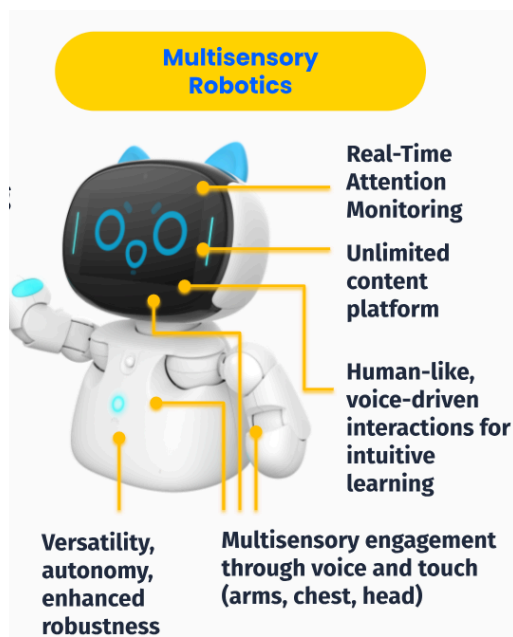
Your AI Language Companion



Ideal for
English Language Learners

“With TeloAI I can finally see how much my ESL students actually speak and where they struggle.”
— Grade 2 Teacher

How TeloAI Works



- **Students speak directly with Telo** in English, French, or Spanish, practicing natural conversations.
- **Telo listens:** automatically analyzing dialogues, identifying strengths and common errors.
- **Telo adapts in real time:** encouraging longer and more accurate responses.
- **Telo remembers:** recalls each student’s interests, preferred topics, and challenges, making every interaction personalized.
- **Telo includes a teacher friendly dashboard** which delivers instant insights, from vocabulary growth to engagement time.



APPLICATIONS FOR THE IMMERSIVE LANGUAGE LEARNING GRANT

DUE DATE EXTENDED TO 11/18/25 at 11:59 pm ET

https://bit.ly/TeloAI_Grant_2025

